

ACOMA TOWNSHIP

Each township has six files containing six sections in each, and one file containing all 36 sections.

Acoma01to06.pdf
Acoma07to12.pdf
Acoma13to18.pdf
Acoma19to24.pdf
Acoma25to30.pdf
Acoma31to36.pdf
AcomaAll36.pdf

The points are listed starting with the point above the SE corner and continuing in a counter-clockwise rotation around the section. This normally begins with the East point, Northeast, then North, but may also include Witness Corners, and/or Meander Corners.

Definitions

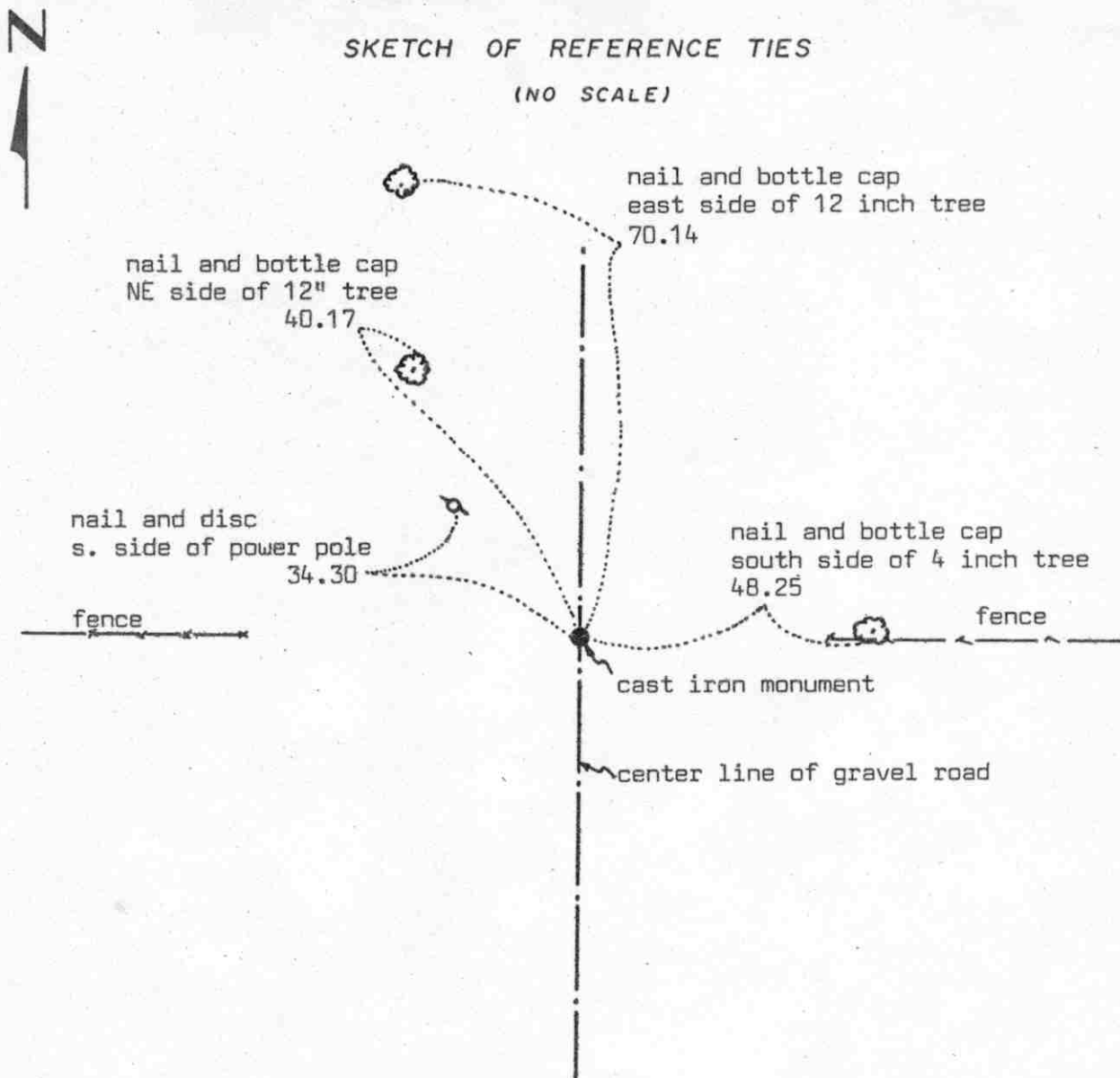
Witness Corner: A witness corner “stands in” when the true corner cannot be monumented or occupied because of difficult terrain or obstruction of the corner sight. The witness corner must be on the section line and is usually 5 or 10 chains away from the true corner.

Meander Corner: The intersection of a township, range, or section line and the banks of a navigable stream or meandering body of water.

Certificate of Location of Government Corner

SKETCH OF REFERENCE TIES

(NO SCALE)



Statement of evidence relative to this corner location on sheet 2

I hereby certify that this document was prepared by me or under my direct supervision.

Willard Pellinen

Willard Pellinen
McLeod County Surveyor
License No. 9626

Date 3/1/89

OFFICE OF THE COUNTY RECORDER
MCLEOD COUNTY, MINNESOTA.

I hereby certify that this document was filed in this office at 9 o'clock A. M. on the 16th day of March, 19 89.

Carmen (Jodie), County Recorder
By _____, Deputy

Document No. 227284

EAST QUARTER corner, Section 7, Township 117 North, Range 30 West

Certificate of Location of Government Corner

This corner was set in 1856 by D.L.Langton of the Government Land Office. His notes state "set quarter section post, drove charred stake, raised mound of earth, planted locust seed at corners of trench as per instructions".

March 23, 1979. We chained the east line of Section 7 and set a temporary quarter corner on the center line of the road in line with fences east and west.

August 30, 1979. We dug for the corner, John Tupa from Hutchinson, with a backhoe. At 3 feet below the road surface we found a rotted wood stake. This was in line with the fences east and west and on the approximate center line of the gravel road. We took 2 reference ties.

November 2, 1979. We set a McLeod County cast iron monument at the location of the wood stake.

January, 1985. We measured the east line of Section 7 electronically and found the monument to be within $1\frac{1}{2}$ feet of being half way between the section corners.

May 14, 1981. We found the cast iron monument in good condition and we took additional reference ties.

June 27, 1988. We found the monument in good condition and the reference ties o.k.

We feel the found wood stake, the center line of the road and the fences have perpetuated the correct location of the east quarter corner of Section 7.

NORTHEAST

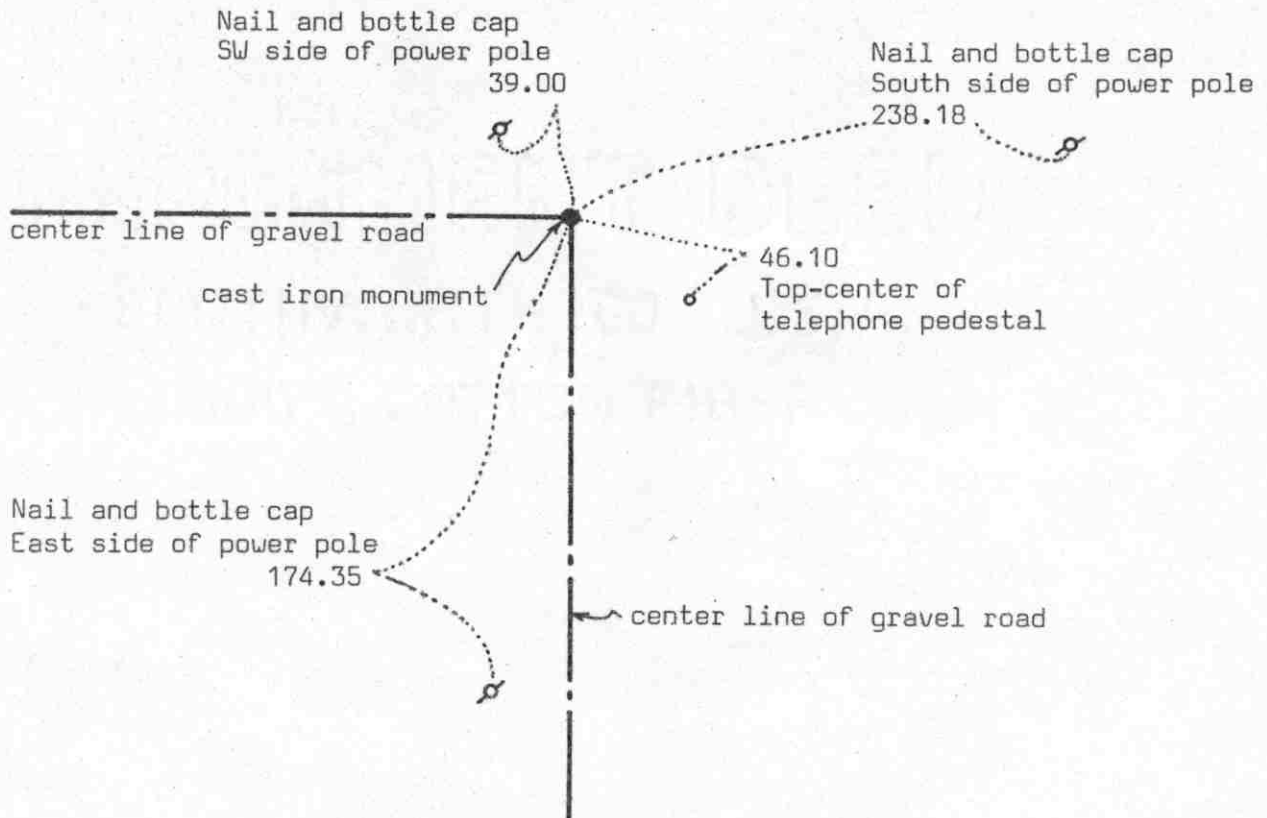
corner, Section 7, Township 117 North, Range 30 West

Certificate of Location of Government Corner



SKETCH OF REFERENCE TIES

(NO SCALE)

Statement of evidence relative to this corner location on sheet 2

I hereby certify that this document
was prepared by me or under my
direct supervision.

Willard Pellinen

Willard Pellinen
McLeod County Surveyor
License No. 9626

Date 3/29/89

OFFICE OF THE COUNTY RECORDER
MCLEOD COUNTY, MINNESOTA.

I hereby certify that this document was filed in this
office at 3 o'clock P.M. on the 6th day
of April, 19 89.

Carmen Postle, County Recorder

By _____, Deputy

Document No. 227618

NORTHEAST corner, Section 7, Township 117 North, Range 30 West

Certificate of Location of Government Corner

This corner was set in 1856 by D.L.Langton of the Government Land Office. He "set post to Sections 5,6,7 and 8, drove charred stake, raised mound of earth, planted locust seeds at corners of trench as per instructions."

Old survey notes in County surveyor book at court house show a stone at this corner.

March 22, 1979. We measured north and east lines of Section 7 and set a temporary northeast corner.

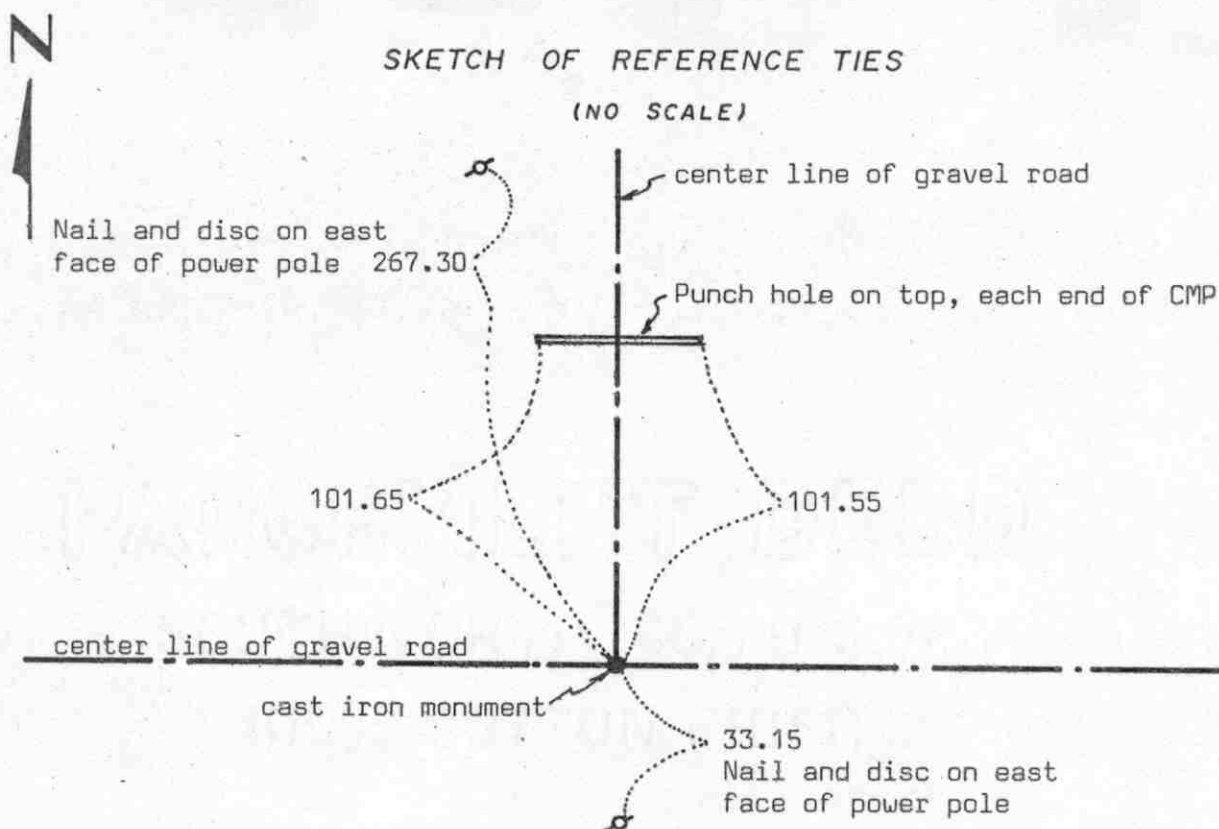
On August 30, 1979, we dug for the corner, John Tupa from Hutchinson with a backhoe. Down $2\frac{1}{2}$ feet below the road surface we found a large stone with a wood stake beside it. We took a photo and reference ties. Left stone in place.

On November 2, 1979, we set a McLeod County cast iron monument and took additional reference ties.

On June 6, 1988, we found the monument in good condition and the reference ties good.

NORTH QUARTER corner, Section 7, Township 117 North, Range 30 West

Certificate of Location of Government Corner

Statement of evidence relative to this corner location on sheet 2

I hereby certify that this document was prepared by me or under my direct supervision.

Willard Pellinen

Willard Pellinen
McLeod County Surveyor
License No. 9626

Date 3/30/89

OFFICE OF THE COUNTY RECORDER
MCLEOD COUNTY, MINNESOTA.

I hereby certify that this document was filed in this office at 3 o'clock P.M. on the 6th day of April, 19 89.

Carmen Pellinen, County Recorder
By _____, Deputy

Document No. 227619

NORTH QUARTER corner, Section 7, Township 117 North, Range 30 West

Certificate of Location of Government Corner

This corner was originally set in 1856 by D.L.Langton of the Government Land Office. He "set quarter section post, drove charred stake, raised mound of earth and planted locust seeds at the corners of trench as per instructions,"

1913. Survey notes by E.L.Higgins show an iron stake at this corner.

May 10. 1974. We found an iron stake, $1\frac{1}{2}$ inches by 2 inches on top, down $2\frac{1}{2}$ feet below the road surface. We took reference ties and set a McLeod County cast iron monument over the found stake.

June 13, 1988. We found the monument in good condition and the reference ties good.

We measured 2705.64 feet to the northwest corner of Section 7 compared with a distance of 2703.2 feet by E.L.Higgins in 1913.

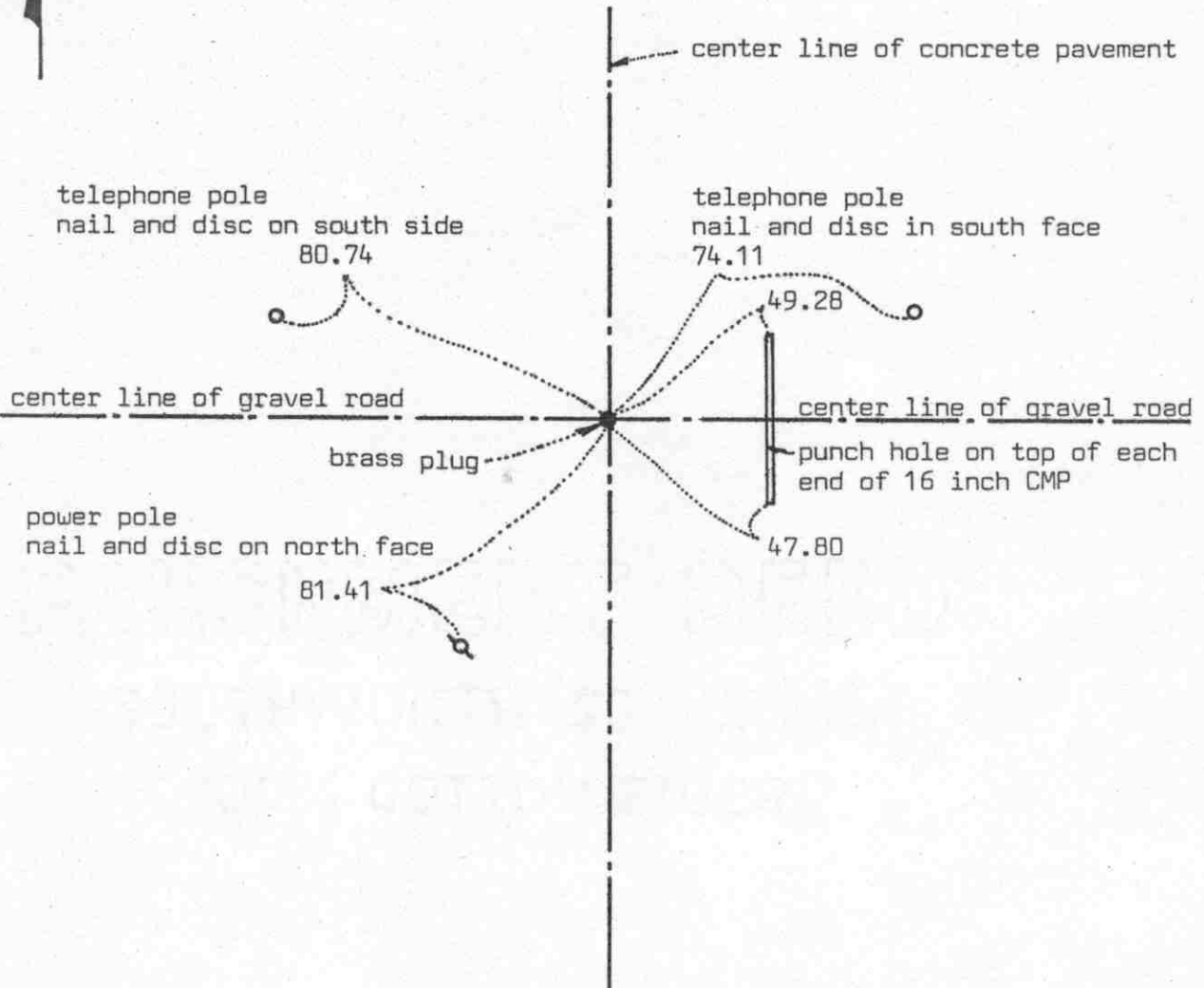
We believe the iron stake we found is the same stake Higgins had in 1913 and has perpetuated the correct location of the quarter corner.

NORTHWEST corner, Section 7, Township 117 North, Range 30 West

Certificate of Location of Government Corner



SKETCH OF REFERENCE TIES (NO SCALE)



Statement of evidence relative to this corner location on sheet 2

I hereby certify that this document was prepared by me or under my direct supervision.

Willard Pellinen

Willard Pellinen
McLeod County Surveyor
License No. 9626

Date 2/11/89

OFFICE OF THE COUNTY RECORDER
MCLEOD COUNTY, MINNESOTA.

I hereby certify that this document was filed in this office at 9 o'clock A.M. on the 15th day of Feb, 19 89.

Carmen Potlie, County Recorder
By _____, Deputy

Document No. 226961

NORTHWEST corner, Section 7, Township 117 North, Range 30 West

Certificate of Location of Government Corner

This corner was established by John Ryan of the Government Land Office in August 1855. He set post in mound as per instructions with deposit of charcoal.

State Highway right of way plans show this corner to be on center line station 153+22.9.

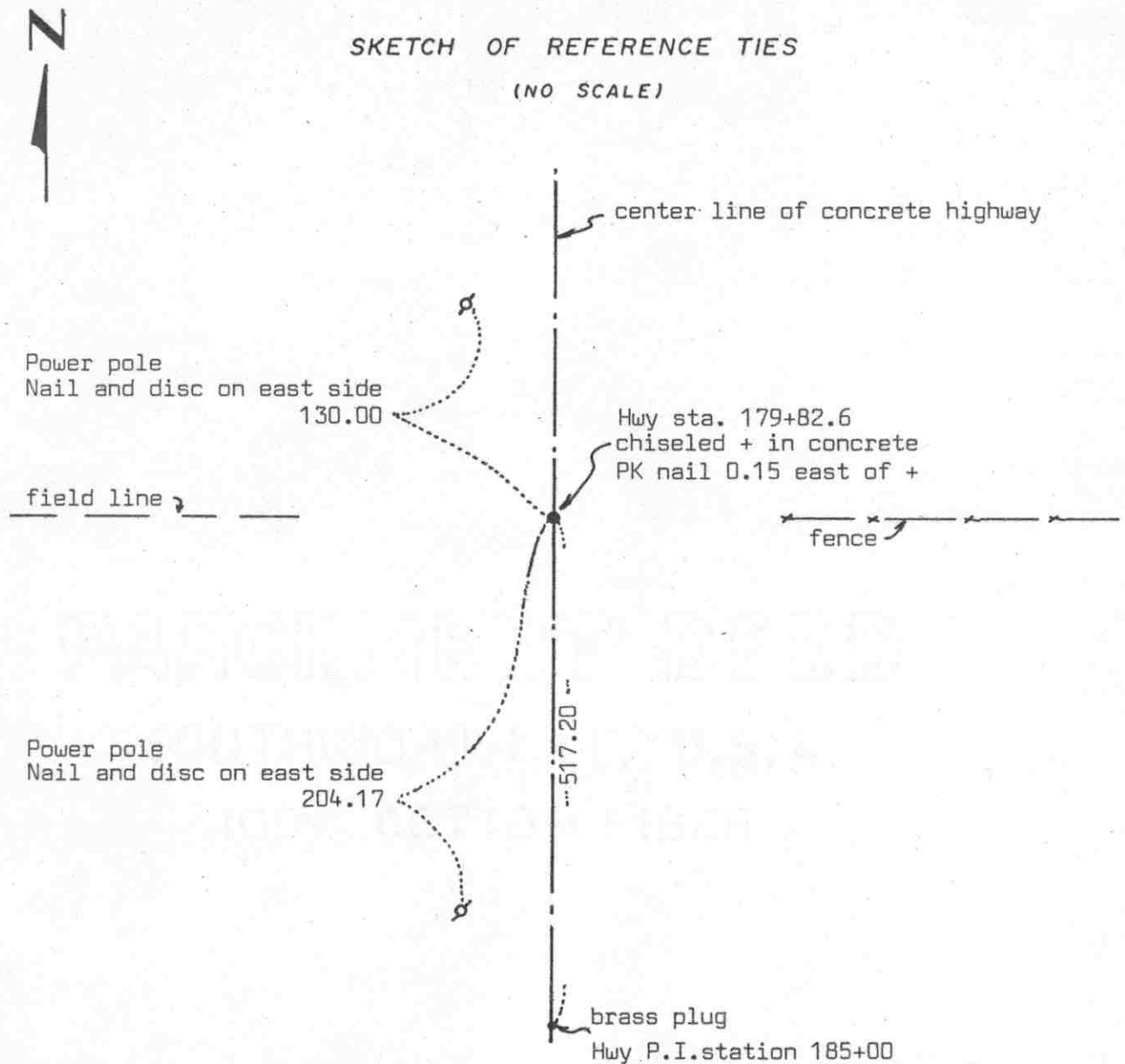
On January 5, 1973, we found a brass plug at Highway station 153+22.9 and took reference ties.

1925 survey in Section 12, Township 117, Range 31 shows a distance of 2656 feet to the west quarter corner of Section 7. We measured 2658.21 feet. 1913 survey by E.L.Higgins in Section 6 shows a distance of 2663.8 feet to the west quarter corner of Section 6. We measured 2661.58 feet.

On June 14, 1988, we found the brass plug and the reference ties checked o.k.

WEST QUARTER corner, Section 7, Township 117 North, Range 30 West

Certificate of Location of Government Corner

SKETCH OF REFERENCE TIES
(NO SCALE)Statement of evidence relative to this corner location on sheet 2

I hereby certify that this document
was prepared by me or under my
direct supervision.

Willard Pellinen

Willard Pellinen
McLeod County Surveyor
License No. 9626

Date 3/23/89

OFFICE OF THE COUNTY RECORDER
MCLEOD COUNTY, MINNESOTA.

I hereby certify that this document was filed in this
office at 3 o'clock P.M. on the 6th day
of April, 1989.

Carmen Dotlie, County Recorder

By _____, Deputy

Document No. 227620

WEST QUARTER corner, Section 7, Township 117 North, Range 30 West

Certificate of Location of Government Corner

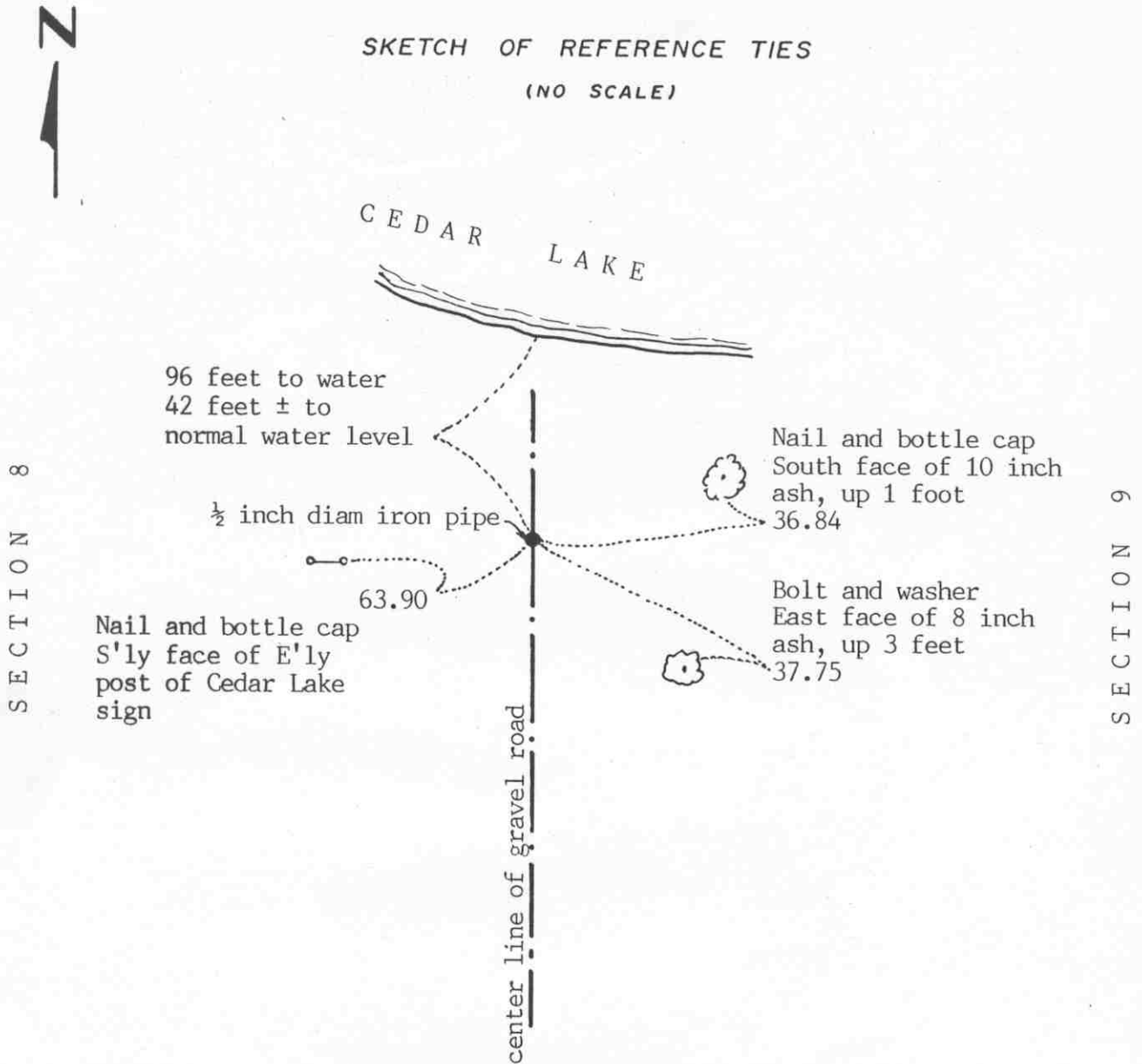
This corner was originally set by John Ryan of the Government Land Office in 1855. He set post in mound of earth with a deposit of charcoal as per instructions.

On August 17, 1973, we chiseled an + in the concrete highway center line. We set the corner at the Highway No. 22 center line station 179+82.6 as per highway right of way plans. We found brass plugs at P.I. stations 185+00 and 153+22.9 and set the quarter corner at a proration of highway distances.

Witness corner corner, Section 8, Township 117 North, Range 30 West

Certificate of Location of Government Corner

SKETCH OF REFERENCE TIES
(NO SCALE)



Statement of evidence relative to this corner location on sheet 2

I hereby certify that this document was prepared by me or under my direct supervision.

Willard Pellinen

Willard Pellinen
McLeod County Surveyor
License No. 9626

Date February 6, 1991

OFFICE OF THE COUNTY RECORDER
MCLEOD COUNTY, MINNESOTA.

I hereby certify that this document was filed in this office at 9 o'clock A.M. on the 7th day of Feb, 1991.

Carmen Ostlie, County Recorder

By _____, Deputy

Document No. 237448

Witness _____ corner, Section 8, Township 117 North, Range 30 West

Certificate of Location of Government Corner

1958. DNR set a monument on the east line of Section 8 at the south shore of Cedar Lake. (Survey of Lake Access)

May 14, 1981. Mr. Milan Plath, who has resided in Government Lot 4 of Section 8 for 20 years, said grader operator pulled out the monument when grading the road. The operator reset the monument. We checked it for line using a DNR monument 207.45 feet south and the southeast corner of Section 8. We replaced it with a McLeod County cast iron monument and took reference ties.

March 28, 1990. The monument has been destroyed by construction of a boat landing. We set a $\frac{1}{2}$ inch diameter iron pipe at the same location using measurements from our surveys in Section 8. We took new reference ties. This monument is 2239.85 feet north of the southeast corner of Section 8.

WITNESS corner, Section 8, Township 117 North, Range 30 West

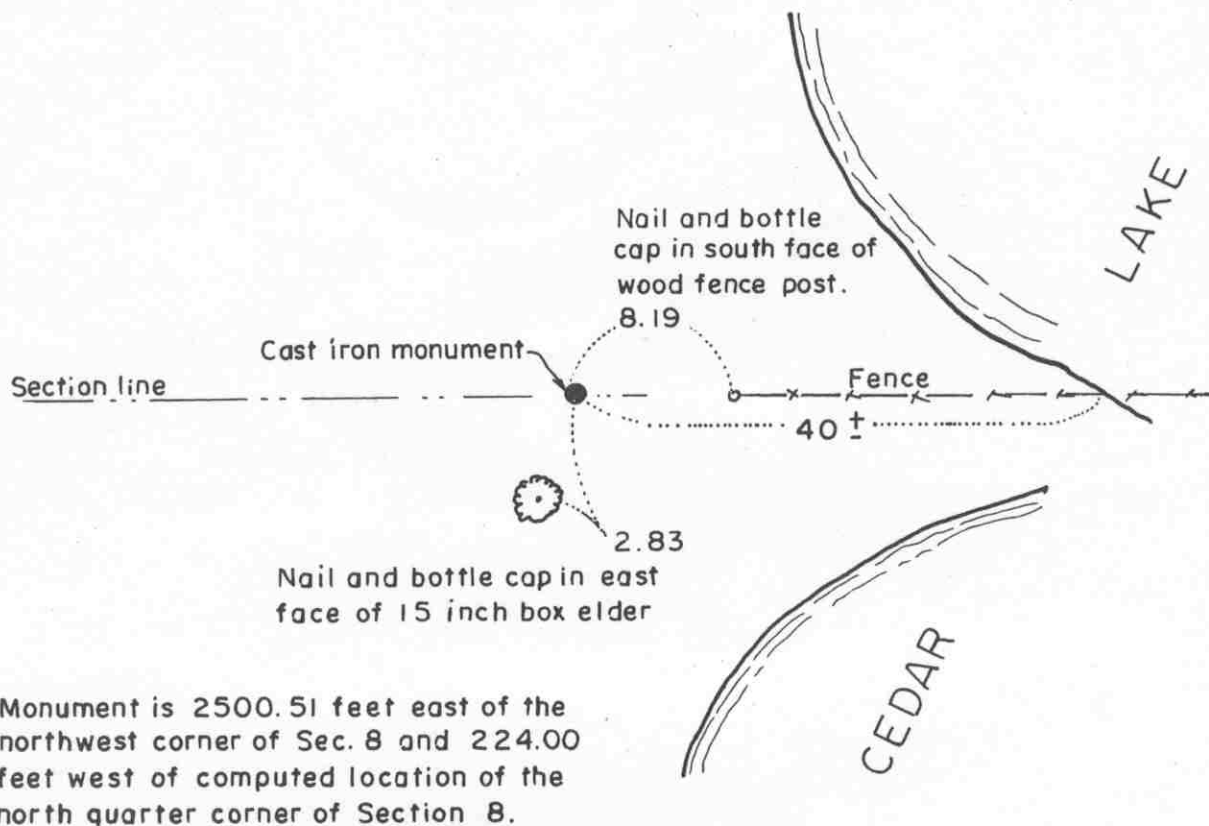


Certificate of Location of Government Corner

SKETCH OF REFERENCE TIES

(NO SCALE)

SECTION 5



Monument is 2500.51 feet east of the northwest corner of Sec. 8 and 224.00 feet west of computed location of the north quarter corner of Section 8.

SECTION 8

Statement of evidence relative to this corner location on sheet 2

I hereby certify that this document was prepared by me or under my direct supervision.

Willard Pellinen

Willard Pellinen
McLeod County Surveyor
License No. 9626

Date July 6, 1993

OFFICE OF THE COUNTY RECORDER
MCLEOD COUNTY, MINNESOTA.

I hereby certify that this document was filed in this office at 9 o'clock A.M. on the 9th day of January, 19 96.

Carmen Estelle Mulder, County Recorder

By Charleen Engelman, Deputy

Document No. 270219

Witness _____ corner, Section 8, Township 117 North, Range 30 West

Certificate of Location of Government Corner

Witness corner to north quarter corner of Section 8, along north line of Northwest Quarter.

December 27, 1984. We set a $\frac{1}{2}$ inch diameter iron pipe along the north line of the Northwest Quarter of Section 8, a distance of 224.00 feet west of the computed north quarter corner location of Section 8. North quarter corner falls in the lake. This point is 2500.51 feet east of the northwest corner of Section 8.

July 3, 1985. We set a cast iron monument at the corner with a $\frac{1}{2}$ inch diameter iron pipe beneath it. Checked the reference ties. This witness corner is along an east-west fence line.

EAST QUARTER corner, Section 9, Township 117 North, Range 30 West

Certificate of Location of Government Corner

SKETCH OF REFERENCE TIES

(NO SCALE)

Nail and bottle cap in north
face of 15 inch willow

42.02

1 1/2 inch diam. iron pipe

Nail and bottle cap
in N'y face of most
E'y of 3 willows

24.88

35.10

Nail and bottle cap in
NW face of 16 inch
willow.

133.10

Nail and bottle cap in west
face of quad. 15 inch willow

SECTION 9

SECTION 10

Statement of evidence relative to this corner location on sheet 2

I hereby certify that this document
was prepared by me or under my
direct supervision.

Willard Pellinen

Willard Pellinen
McLeod County Surveyor
License No. 9626

Date Feb. 1, 1995

OFFICE OF THE COUNTY RECORDER MCLEOD COUNTY, MINNESOTA.

I hereby certify that this document was filed in this
office at 9 o'clock A. M. on the 6th day
of February, 1995.

Carmin Otth Mulder, County Recorder

By _____, Deputy

Document No. 264049

EAST QUARTER corner, Section 9, Township 117 North, Range 30 West*Certificate of Location of Government Corner*

1856. D.L.Langton of the General Land Office originally established this corner. He set a post, in a marsh, and marked a 12 inch ash and an 8 inch linden for bearing trees.

August 1976. McCombs Knutson Associates (Dickman Knutson, county surveyor) searched the area and found a wood post in a marsh. This was on the southerly extension of a fence from the north. No occupation lines in the area of the corner. The fence to the north ended about 464 feet north of the wood post.

August 30, 1976. Knutson replaced the wood post with a McLeod County cast iron monument.and took available ties.

March 7, 1985. We could not find the monument. We set a 1½ inch diameter iron pipe, 5 feet long at the corner using the 1976 reference ties.

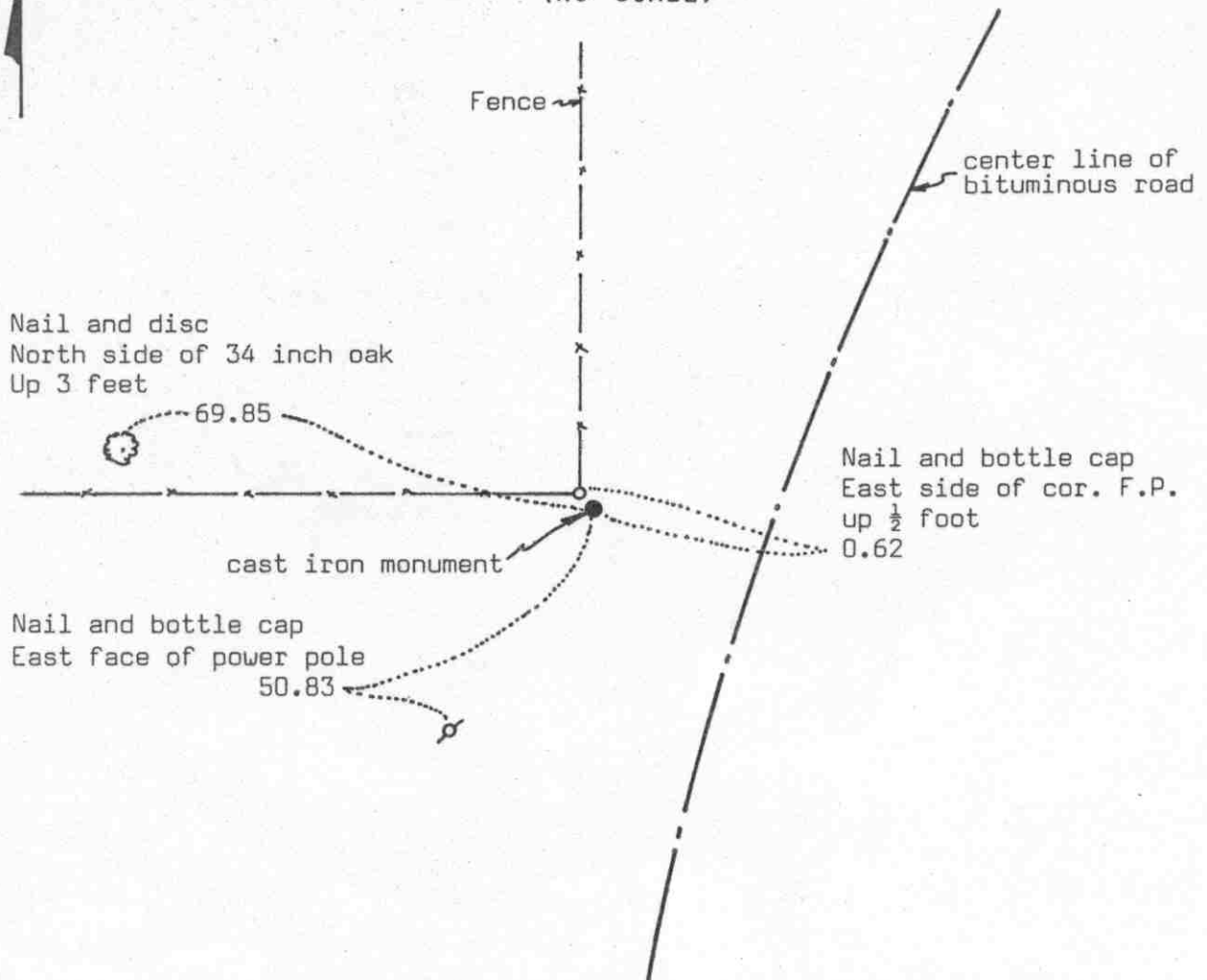
November 15, 1989. We found the iron pipe in good condition, 2 feet up, over the ice. We measured the east line of Section 9 and found the corner to be 18.78 feet south of a split between the section corners and 47.67 feet west of a straight line between the section corners.

NORTHEAST corner, Section 9, Township 117 North, Range 30 West

Certificate of Location of Government Corner



SKETCH OF REFERENCE TIES (NO SCALE)



Statement of evidence relative to this corner location on sheet 2

I hereby certify that this document was prepared by me or under my direct supervision.

Willard Pellinen

Willard Pellinen
McLeod County Surveyor
License No. 9626

Date 3/28/89

OFFICE OF THE COUNTY RECORDER
MCLEOD COUNTY, MINNESOTA.

I hereby certify that this document was filed in this office at 3 o'clock P.M. on the 6th day of April, 19 89.

Armer Ostlie

County Recorder
By _____, Deputy

Document No. 227621

NORTHEAST

corner, Section 9, Township 117 North, Range 30 West

Certificate of Location of Government Corner

This corner was originally set by D.L.Langton of the Government Land Office. He set a post with reference ties to 4 bearing trees.

1926 Highway Department notes show the corner at the fence intersection.

On August 23, 1973, we found a stone and a 1 inch diameter iron pipe at the fence intersection. We replaced the stone and pipe with a McLeod County cast iron monument.

On June 13, 1988, we found the monument in good condition and took new reference ties.

We believe the stone and iron pipe at the fence intersection which has been accepted by the adjoining land owners as the section corner has perpetuated the correct location of the corner.

Certificate of Location of Government Corner

to N 1/4

Witness corner, Section 9, Township 117 North, Range 30 West

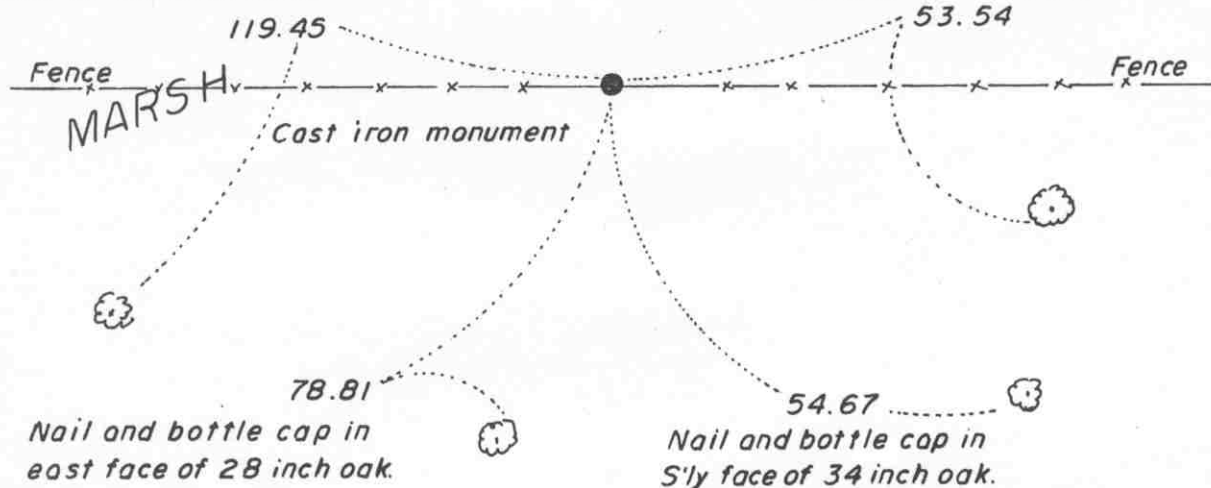
SKETCH OF REFERENCE TIES (NO SCALE)

SECTION 4

Monument is along section line, 2243.54 feet west of the northeast corner of Sec. 9 and 396.46 feet east of the computed location of the N 1/4 corner of Sec. 9, which falls in Cedar Lake.

Nail and bottle cap in north face of 36 inch oak.

Nail and bottle cap in south face of 36 inch oak.



SECTION 9

Statement of evidence relative to this corner location on sheet 2

I hereby certify that this document was prepared by me or under my direct supervision.

Willard Pellinen
Willard Pellinen
McLeod County Surveyor
License No. 9626.

Date July 6, 1993

OFFICE OF THE COUNTY RECORDER MCLEOD COUNTY, MINNESOTA

I hereby certify that this document was filed in this office at 9 o'clock A. M. on the 9th day of January, 19 96.

Carmen Ostlie Mulder, County Recorder

By Charleen Engelmann, Deputy.

Document No. 270220

**WITNESS CORNER TO NORTH QUARTER CORNER OF SECTION 9,
TOWNSHIP 117 NORTH, RANGE 30 WEST.**

January 17, 1984. We found a half inch diameter iron pipe along the north line of Section 9 which was set by Byron Dahle, surveyor.

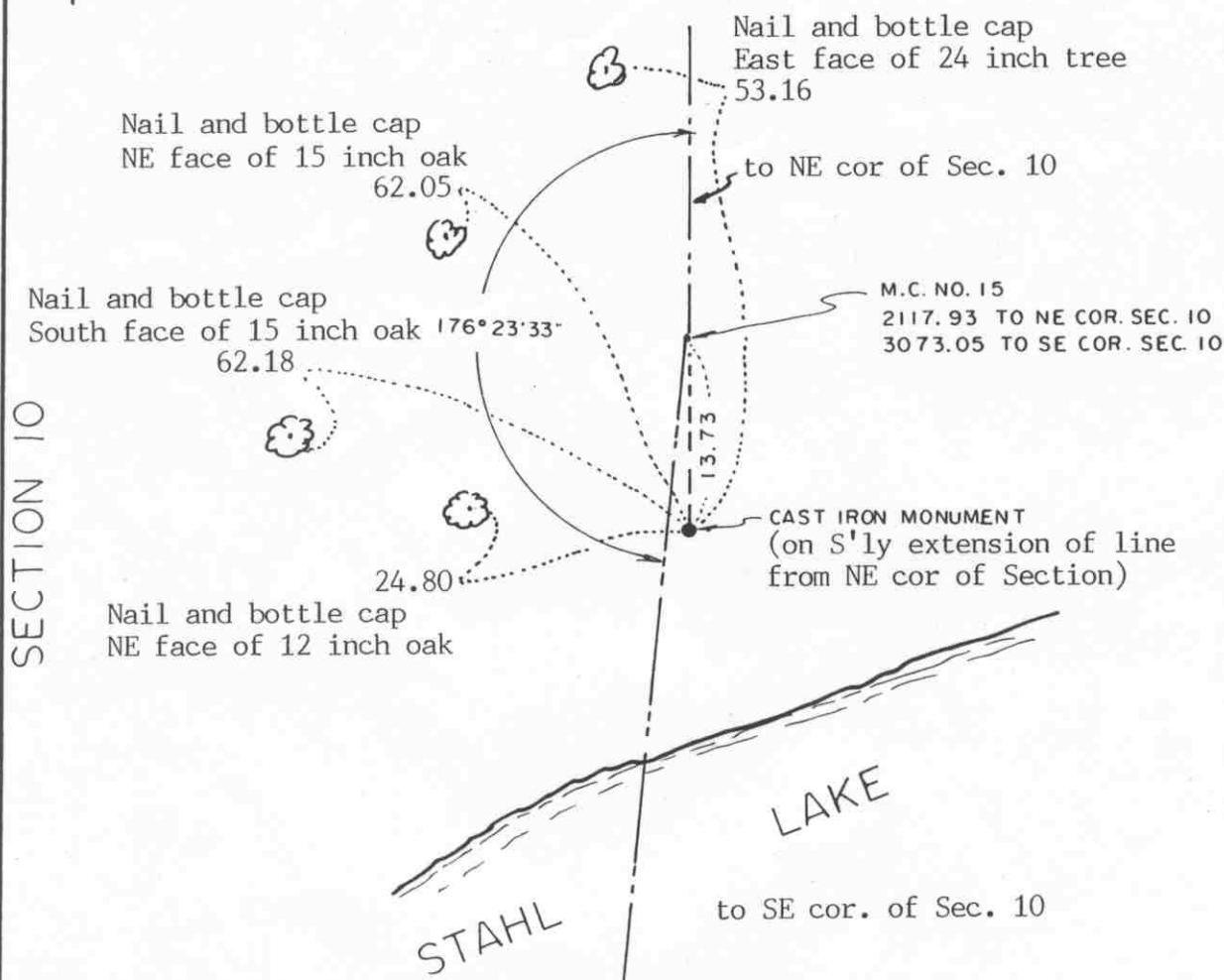
This pipe was was 2243.54 feet west of the northeast corner of Section 9 and 396.46 feet east of the computed north quarter corner of Section 9 which falls in Cedar Lake. We took available reference ties.

August 17, 1984. We set a McLeod County cast iron monument with a 1/2 inch diameter iron pipe below the monument.

corner, Section 10, Township 117 North, Range 30 West

Certificate of Location of Government Corner

SKETCH OF REFERENCE TIES (NO SCALE)



Statement of evidence relative to this corner location on sheet 2

I hereby certify that this document was prepared by me or under my direct supervision.

Willard Pellinen

Willard Pellinen
McLeod County Surveyor
License No. 9626

Date Nov. 13, 1992

OFFICE OF THE COUNTY RECORDER
MCLEOD COUNTY, MINNESOTA.

I hereby certify that this document was filed in this office at 3 o'clock P.M. on the 17th day of November, 1992.

Carmen Estelle Mulder County Recorder

By _____, Deputy

Document No. 248902

Meander Cor. No. 15 corner, Section 10, Township 117 North, Range 30 West

Certificate of Location of Government Corner

1856. D.L.Langton of the General Land Office set a post and marked an 8 inch ironwood and a 12 inch oak for bearing trees.

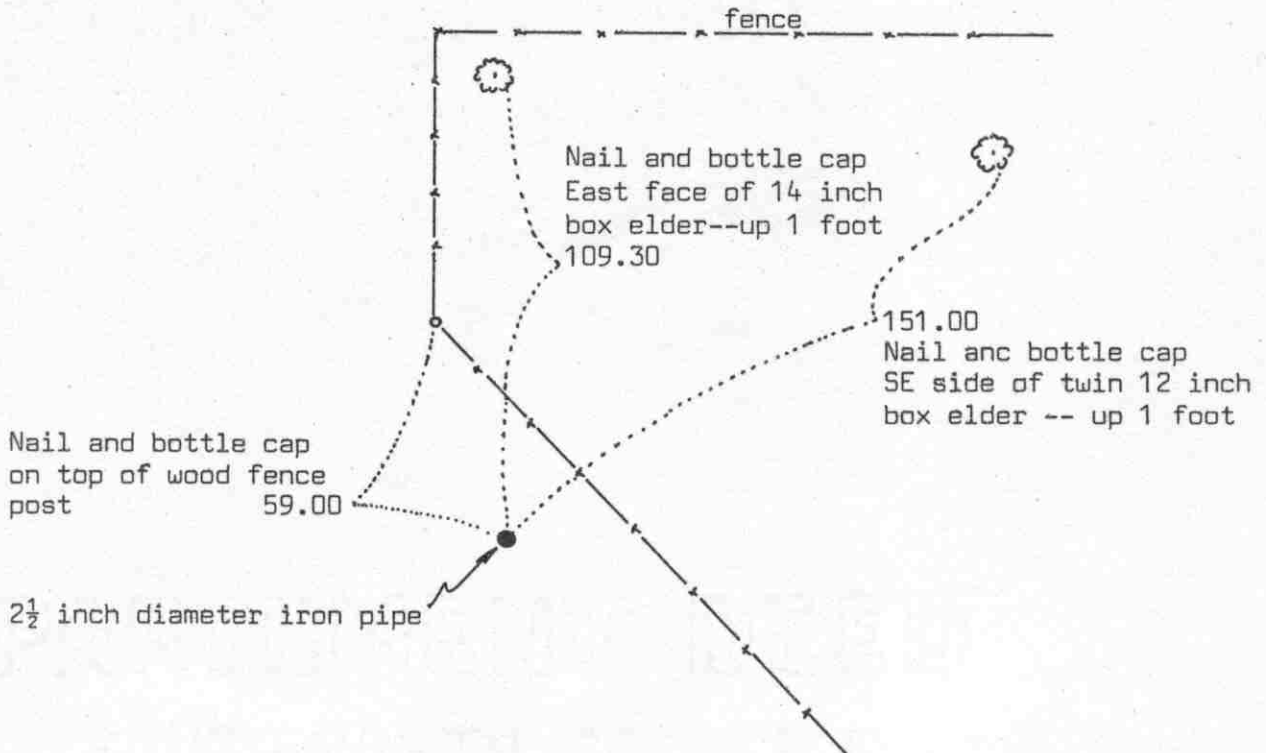
October 9, 1975. McCombs Knutson Associates (Dickman Knutson, county surveyor) set a cast iron monument as a witness corner to Meander Corner No. 15. They took available reference ties. Knutson set the monument along the north-south fence north of Stahl Lake. This fence has been accepted by adjoining property owners as being along the section line

December 13, 1984. We measured the east line of Section 10 and found the cast iron monument to be 13.73 feet south of the computed location of Meander corner No. 15.

November 12, 1992. We found the monument in good condition and checked the reference ties.

NORTHEAST corner, Section 10, Township 117 North, Range 30 West

Certificate of Location of Government Corner

SKETCH OF REFERENCE TIES
(NO SCALE)Statement of evidence relative to this corner location on sheet 2

I hereby certify that this document was prepared by me or under my direct supervision.

Willard Pellinen

Willard Pellinen
McLeod County Surveyor
License No. 9626

Date 5/14/89

OFFICE OF THE COUNTY RECORDER
MCLEOD COUNTY, MINNESOTA.

I hereby certify that this document was filed in this office at 9 o'clock A.M. on the 19th day of May, 1989.

Carmen Potlie, County Recorder
By _____, Deputy

Document No. 228246

NORTHEAST corner, Section 10, Township 117 North, Range 30 West

Certificate of Location of Government Corner

This corner was originally established by D.L.Langton of the Government Land Office in 1856. He set a post in a marsh with reference ties to 3 bearing trees.

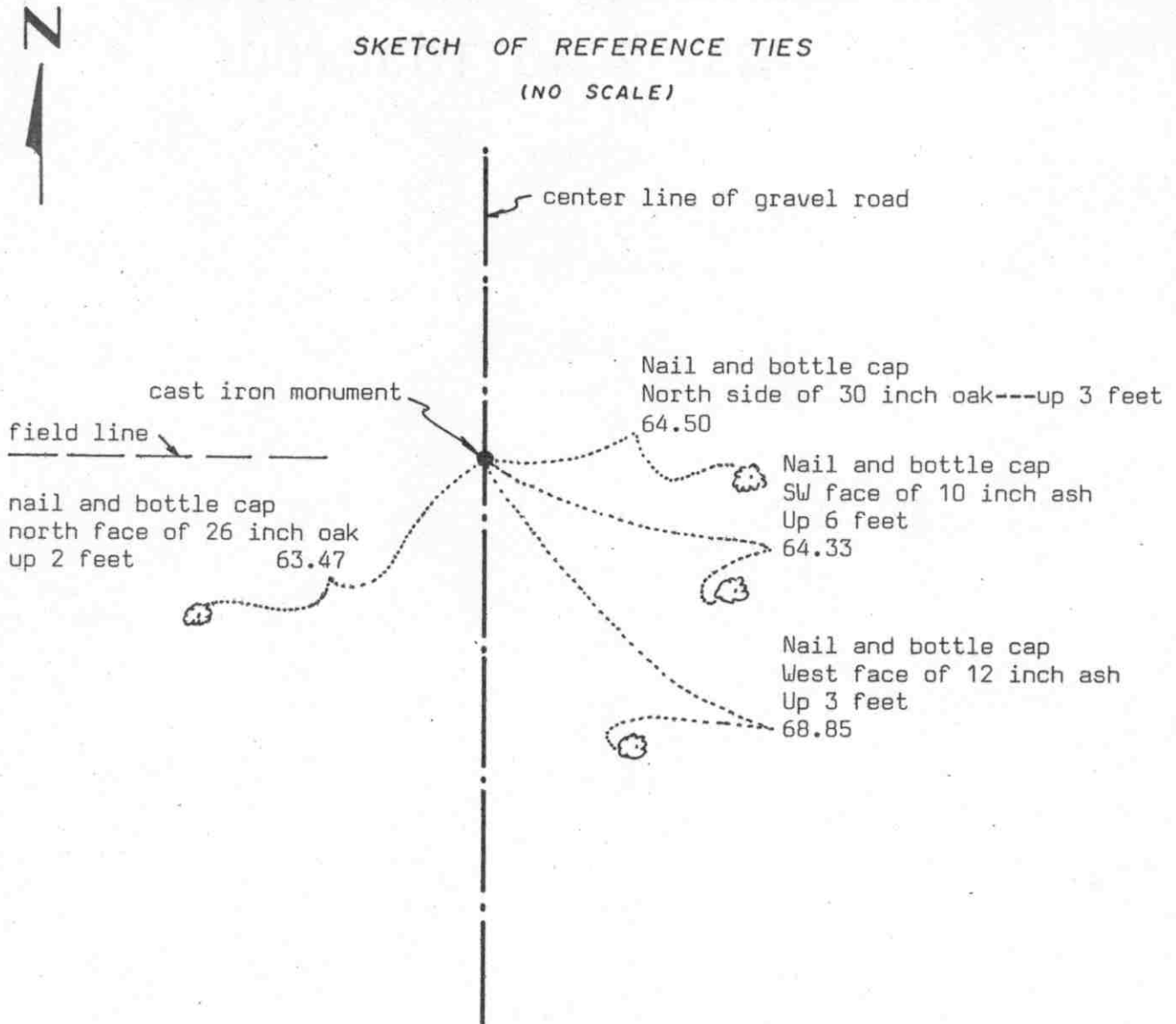
In May, 1977, we found an old wood stake under an old north-south fence. New fence about 5 feet west. Now same owner on all sides of the corner. We replaced the wood stake with a $2\frac{1}{2}$ inch diameter iron pipe 6 feet long and took reference ties. Center line of County Highway NO. 60 falls half way between this corner and the east quarter corner of Section 3.

On February 15, 1989, we took new reference ties to the iron pipe. Old ties had all been destroyed. The old fence had been removed.

We don't know who set the wood stake we found, but there being no evidence to the contrary, we must accept the location of the stake as the correct section corner.

NORTH QUARTER corner, Section 10, Township 117 North, Range 30 West

Certificate of Location of Government Corner

SKETCH OF REFERENCE TIES
(NO SCALE)Statement of evidence relative to this corner location on sheet 2

I hereby certify that this document
was prepared by me or under my
direct supervision.

Willard Pellinen

Willard Pellinen
McLeod County Surveyor
License No. 9626

Date 3/27/89

OFFICE OF THE COUNTY RECORDER
MCLEOD COUNTY, MINNESOTA.

I hereby certify that this document was filed in this
office at 3 o'clock P.M. on the 6th day
of April, 19 89.

Carmen J. J. J., County Recorder

By _____, Deputy

Document No. 227622

NORTH QUARTER corner, Section 10, Township 117 North, Range 30 West

Certificate of Location of Government Corner

This corner was established in 1856 by D.L.Langton of the Government Land Office. He set a post and had reference ties to 2 bearing trees.

1925 survey notes by E.L.Higgins show a stone at this corner and an iron pipe at the center of Section 10, a distance of 2613 feet south of the quarter corner.

1930 survey notes also show a stone at this corner and an iron pipe at the center of the section.

1931 survey notes by E.L.Higgins also shows a stone at the quarter corner.

August 27, 1976. We dug for the corner, John Tupa from Hutchinson, with a backhoe. We found a 6 inch by 6 inch by 6 inch limestone down $1\frac{1}{2}$ feet below the road surface. We tied off and took a photo. Down at 2 feet below the surface we found a field stone, at same location. We found an iron pipe near the center of Section within $1\frac{1}{2}$ feet of 1925 distance.

On August 30, 1976, we set a McLeod County cast iron monument and took additional reference ties.

On May 9, 1988, we found the monument down 3 inches below the road surface in good condition. Only 2 reference ties remaining. We took additional ties.

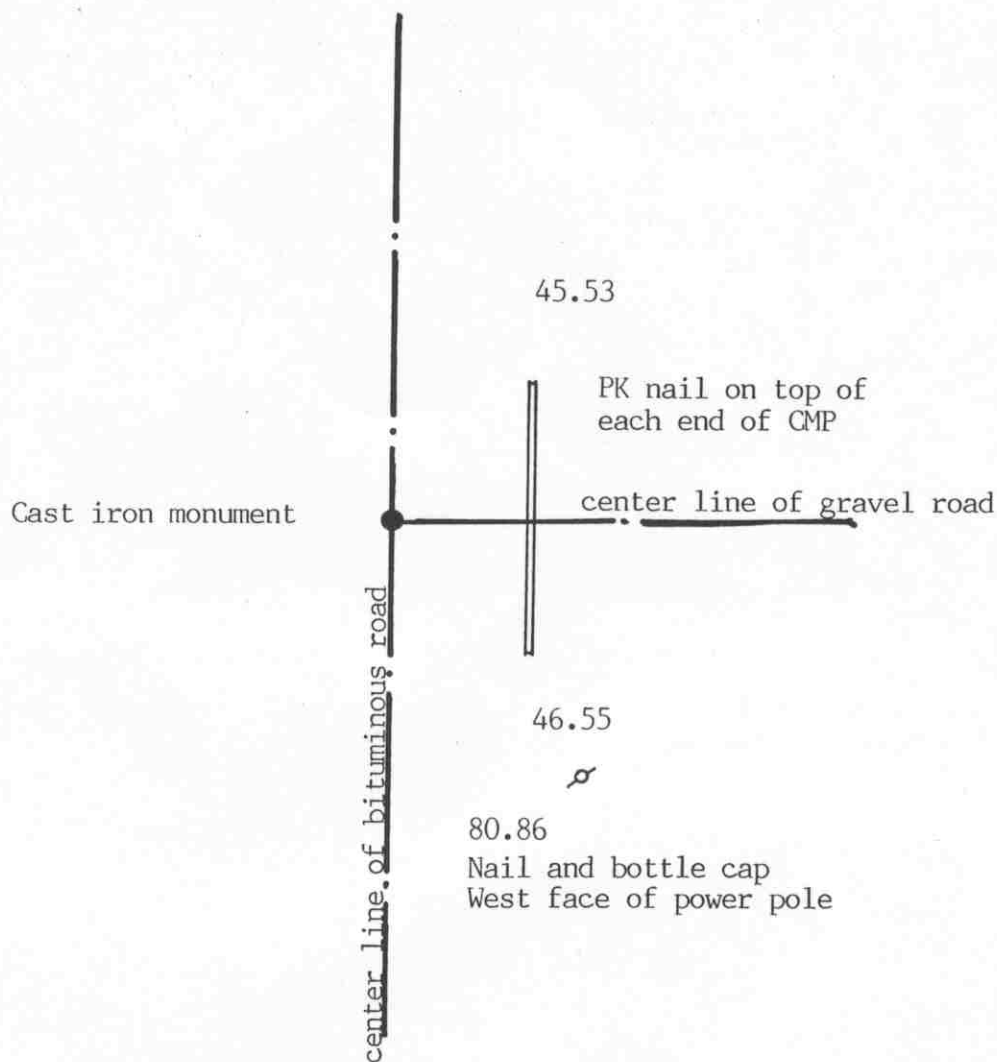
We feel the stone we found in 1976 was the same stone as Higgins had in 1925 and has perpetuated the correct location of the quarter corner.

EAST QUARTER corner, Section 11, Township 117 North, Range 30 West

Certificate of Location of Government Corner

SKETCH OF REFERENCE TIES

(NO SCALE)



Statement of evidence relative to this corner location on sheet 2

I hereby certify that this document was prepared by me or under my direct supervision.

Willard Pellinen

Willard Pellinen
McLeod County Surveyor
License No. 9626

Date November 12, 1992

OFFICE OF THE COUNTY RECORDER
MCLEOD COUNTY, MINNESOTA.

I hereby certify that this document was filed in this office at 3 o'clock P.M. on the 17th day of November, 1992.

Carmen Ottilie Mulder, County Recorder

By _____, Deputy

Document No. 248903

EAST QUARTER corner, Section 11, Township 117 North, Range 30 West

Certificate of Location of Government Corner

1856. D. L. Langton of the General Land Office originally established this corner. He set a post and marked two 20 inch lindens for bearing trees.

December 1974. McCombs Knutson Associates (Dickman Knutson, county surveyor) measured the east line of Section 11 and set a temporary quarter corner on the center line intersection of roads north, south and east.

1975. Knutson excavated at the temporary corner, John Tupa from Hutchinson with a backhoe. They found no evidence of the government corner.

July 22, 1975. Knutson set a McLeod County cast iron monument on the center line of the north-south road on a proration of 1956 distances by the county highway department. The corner fell on the center line intersection of the roads. They took available reference ties.

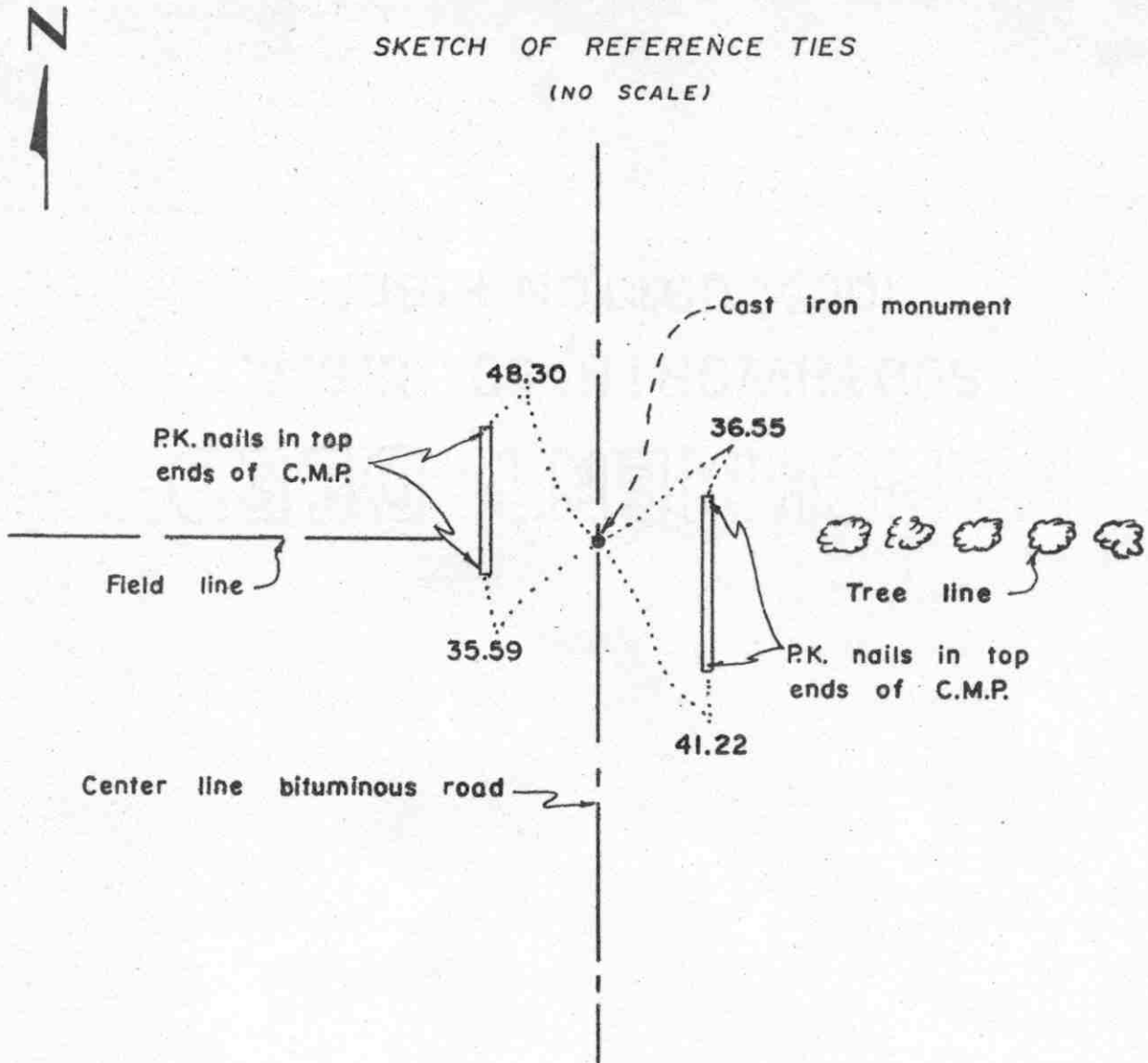
February 13, 1984. We measured the east line of Section 11 and found the monument to be 10.18 feet south and 16.94 feet east of a lost position for the corner.

November 11, 1992. We found the monument in good condition and checked the reference ties.

There being no evidence to the contrary, the monument set by Knutson is accepted as marking the quarter corner. It fits long standing occupation lines, the road center lines.

Northeast corner, Section 11, Township 117 North, Range 30 West

Certificate of Location of Government Corner

SKETCH OF REFERENCE TIES
(NO SCALE)Statement of evidence relative to this corner location on sheet 2

I hereby certify that this document was prepared by me or under my direct supervision.

Willard Pellinen

Willard Pellinen
McLeod County Surveyor
License No. 9626

Date 2/5/89

OFFICE OF THE COUNTY RECORDER
MCLEOD COUNTY, MINNESOTA.

I hereby certify that this document was filed in this office at 3 o'clock P.M. on the 9th day of Feb, 1989.

Carmen Postle, County Recorder

By _____, Deputy

Document No. 226888

NORTHEAST corner, Section 11, Township 117 North, Range 30 West

Certificate of Location of Government Corner

This corner was established by D. Langton of the Government Land Office in 1856. He set a post and took reference ties to 4 bearing trees. A 30 inch Bur Oak, an 18 inch elm, a 12 inch Lind and a 10 inch Lind.

On December 20, 1974, we chained the east line of Section 2 and 11 and set temporary corners.

In 1975, we dug for this corner but found nothing, and on July 22, 1975 we set a cast iron monument on the center line of the road on a proration of 1956 distances by the County Highway Department. We took reference ties. The corner falls in line with a field line to the west and a tree line to the east.

On June 13, 1988, we checked the reference ties and found them good.

We feel this was a obliterated corner whose location has been perpetuated by the center line of the road and the 1956 distances by the County Highway Department.

Certificate of Location of Government Corner


 SKETCH OF REFERENCE TIES
 (NO SCALE)

 Nail and bottle cap
 East face of power pole
 121.95

center line of gravel road

cast iron monument

 Nail and bottle cap
 NW face of 18 inch elm
 59.56

 Nail and bottle cap
 East face of power pole
 172.93

 68.34
 Nail and bottle cap
 NE face of 12 inch box elder
Statement of evidence relative to this corner location on sheet 2

I hereby certify that this document
 was prepared by me or under my
 direct supervision.

Willard Pellinen

 Willard Pellinen
 McLeod County Surveyor
 License No. 9626

 Date 3/29/89

 OFFICE OF THE COUNTY RECORDER
 MCLEOD COUNTY, MINNESOTA.

I hereby certify that this document was filed in this
 office at 3 o'clock P.M. on the 6th day
 of April, 19 89.

Carmine Dettie, County Recorder

By _____, Deputy

 Document No. 227623

NORTH QUARTER corner, Section 11, Township 117 North, Range 30 West

Certificate of Location of Government Corner

This corner was originally set in 1856 by D.L.Langton of the Government Land Office. He set a post and had reference ties to 2 bearing trees.

1931 survey field notes by E.L.Higgins show a stone at this corner.

1974. RCM found a stone with a 1 inch by 2 inch wood stake beside it down 2 feet below the road surface on the center line of the north-south road. They measured south to the south line of church property 825 feet which is the deed distance. They set an iron pipe and took reference ties.

On July 22, 1975, we set a cast iron monument in place of the iron pipe set by RCM.

On December 27, 1984, we found the cast iron monument destroyed by road construction and all reference ties destroyed. We reset an iron pipe at the corner using our distances and angles from our section breakdown.

On July 3, 1985, we replace the iron pipe with a McLeod County cast iron monument and took new reference ties.

On June 13, 1988, we found the monument in good condition and the reference ties good.

We believe the stone and stake found by RCM had perpetuated the correct location of the quarter corner.

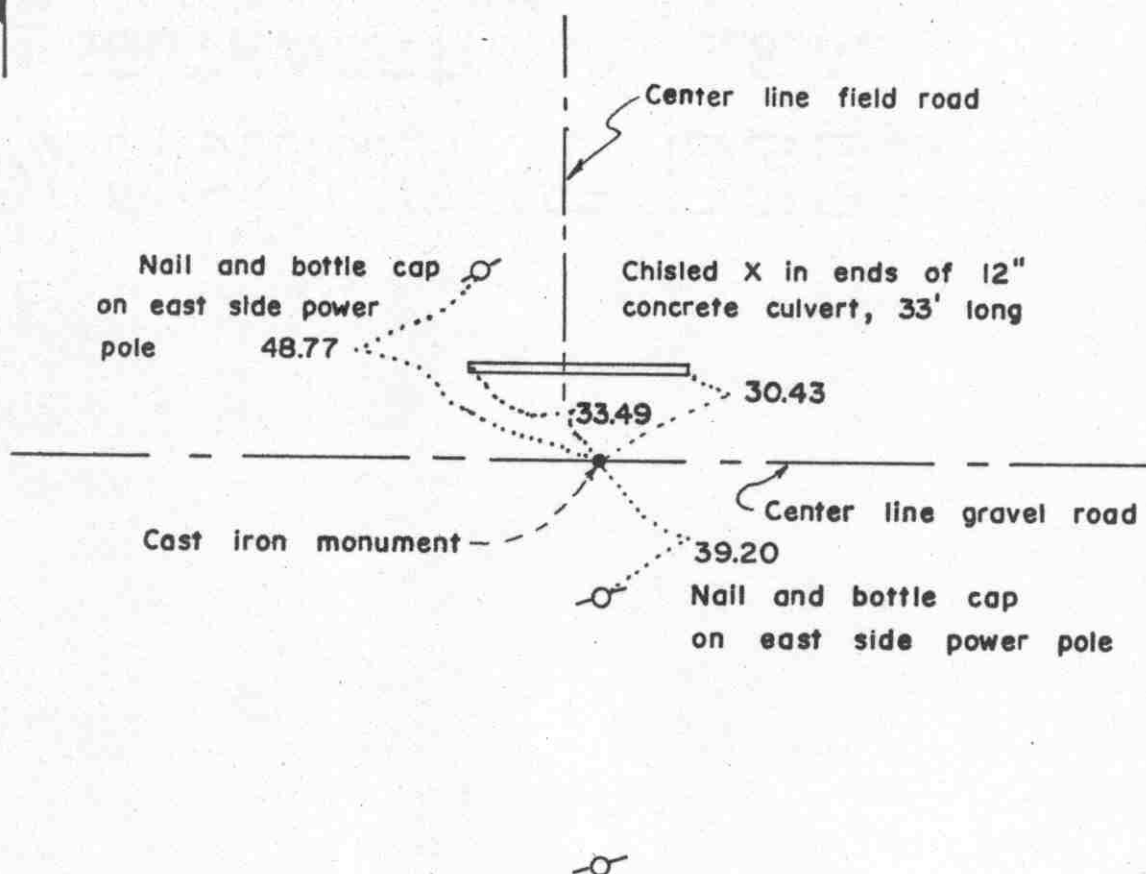
East Quarter corner, Section 12, Township 117 North, Range 30 West

Certificate of Location of Government Corner



SKETCH OF REFERENCE TIES

(NO SCALE)

Statement of evidence relative to this corner location on sheet 2

I hereby certify that this document was prepared by me or under my direct supervision.

Willard Pellinen

Willard Pellinen
McLeod County Surveyor
License No. 9626

Date 2/6/89

OFFICE OF THE COUNTY RECORDER
MCLEOD COUNTY, MINNESOTA.

I hereby certify that this document was filed in this office at 3 o'clock P.M. on the 9th day of Feb, 19 89.

Carmen Dotlie, County Recorder
By _____, Deputy

Document No. 226890

EAST QUARTER corner, Section 12, Township 117 North, Range 30 West

Certificate of Location of Government Corner

This corner was established by John Ryan of the Government Land Office in 1855 and was monumented by wood post and referenced to 2 bearing trees.

In Feruary, 1955, Fred Koenig surveyed in the South-east Quarter of Section 12 and he had an iron monument at the east quarter corner. His notes don't show what type of monument was found.

In December, 1968, we found an iron rod at this corner. We measured 2609.06 feet to the southeast corner of Section 12, compared with a distance of 2608.5 by Koenig in 1955.

We accepted the found iron rod as the true corner and replaced it with a McLeod County cast iron monument.

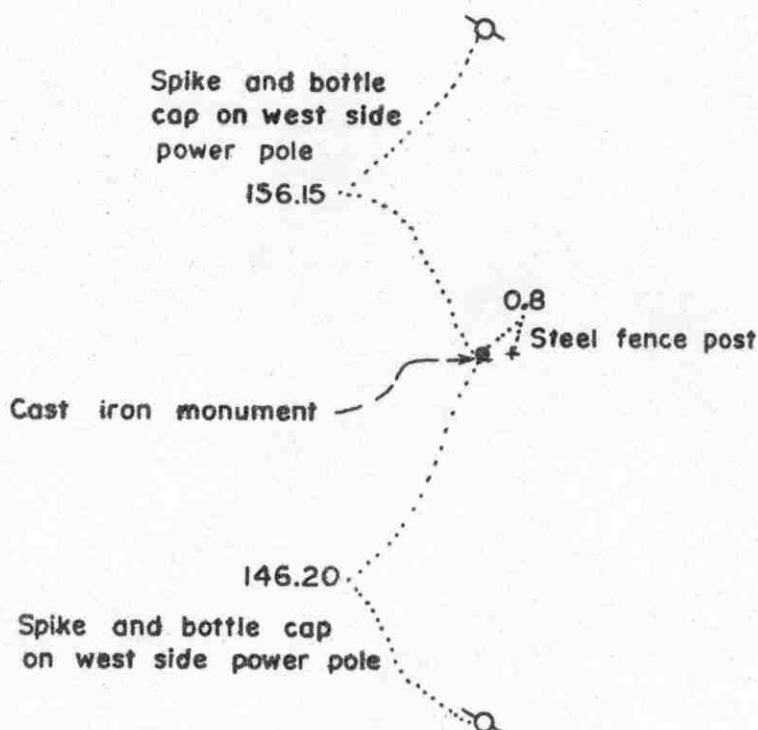
Northeast corner, Section 12, Township 117 North, Range 30 West

Certificate of Location of Government Corner



SKETCH OF REFERENCE TIES

(NO SCALE)

Statement of evidence relative to this corner location on sheet 2

I hereby certify that this document was prepared by me or under my direct supervision.

Willard Pellinen

Willard Pellinen
McLeod County Surveyor
License No. 9626

Date 2/5/89

OFFICE OF THE COUNTY RECORDER
MCLEOD COUNTY, MINNESOTA.

I hereby certify that this document was filed in this office at 3 o'clock P.M. on the 9th day of Feb, 1989.

Carmen Costie, County Recorder

By _____, Deputy

Document No. 226889

NORTHEAST corner, Section 12, Township 117 North, Range 30 West

Certificate of Location of Government Corner

This corner was established by the Government in 1855 and was monumented by a wood post and referenced to 4 bearing trees.

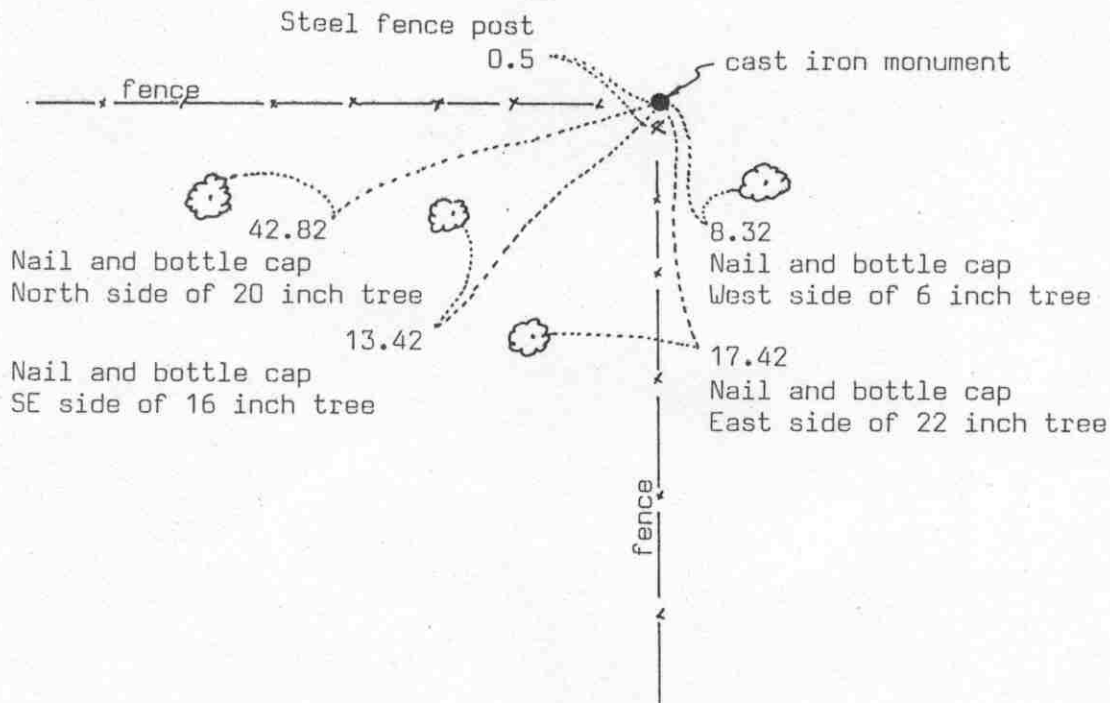
In December, 1968, we found a 2 inch diam. iron pipe with a wood post beside it. This iron pipe was in line with a power pole line running north and south. All the land around this corner belongs to one owner so there was no other occupation line except the power poles. We took reference ties to the iron pipe.

We replace the iron pipe with a McLeod County cast iron monument.

We don't know who set this iron pipe and wood post, but there being no evidence to the contrary, we will accept it as the northeast corner of Section 12.

NORTH QUARTER corner, Section 12, Township 117 North, Range 30 West

Certificate of Location of Government Corner

SKETCH OF REFERENCE TIES
(NO SCALE)Statement of evidence relative to this corner location on sheet 2

I hereby certify that this document was prepared by me or under my direct supervision.

Willard Pellinen

Willard Pellinen
McLeod County Surveyor
License No. 9626

Date 7/31/89

OFFICE OF THE COUNTY RECORDER
MCLEOD COUNTY, MINNESOTA.

I hereby certify that this document was filed in this office at 9 o'clock A.M. on the 15th day of Aug., 1989.

Carmen Gottlieb, County Recorder

By _____, Deputy

Document No. 229493

NORTH QUARTER corner, Section 12, Township 117 North, Range 30 West

Certificate of Location of Government Corner

This corner was originally established by the government in 1856. D.L.Langton set a post and had reference ties to 2 bearing trees.

December 16, 1974. George Schleuter, 63 years old, had lived in the Northeast Quarter of Section 12 all his life, said all the "forties" along the south line of Section 1 were surveyed about 25 years ago. Said there used to be an iron pipe at the north quarter corner at the fence intersection. Fences running west and south.

January 2, 1975. We measured the north line of Section 12 and set a temporary quarter corner at the fence intersection. A fence running north-south a quarter mile east of our corner is half way between our corner and the northeast corner of Section 12.

October 15, 1975. We set a McLeod County cast iron monument at the fence intersection in place of the old rotted fence corner. We took reference ties.

February 24, 1989. We found the cast iron monument in good condition and the reference ties good.

We accept the old fence corner as having perpetuated the true quarter corner.